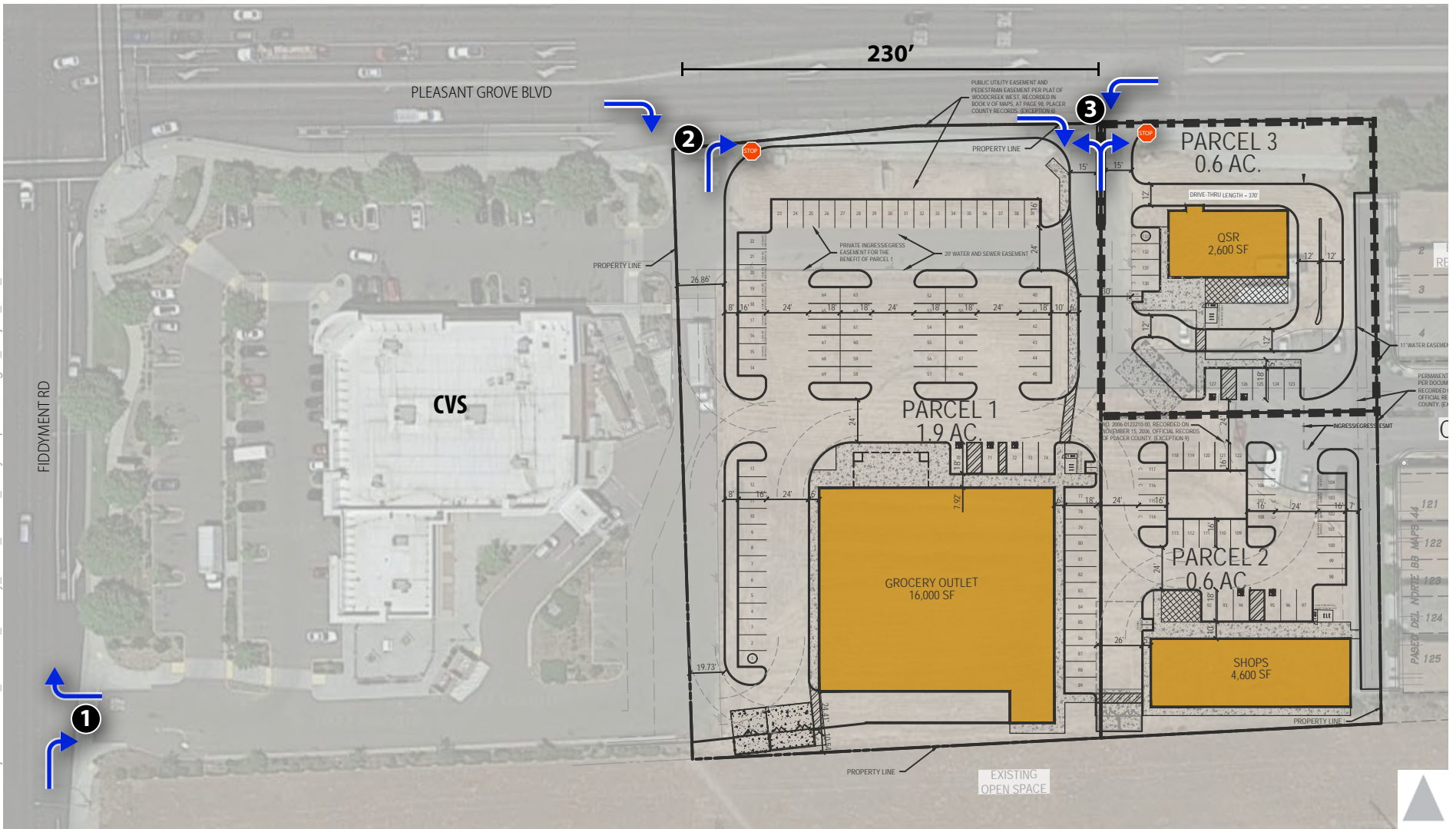


N:\2022 Projects\4178.00_Roseville_Grocery_Outlet_Access_Study\Graphics\GIS\MXD\Fig01_ProjectLocation.mxd

- Project Site
- City Boundary
- Existing CVS Pharmacy
- Park/Open Space



Figure 1
Project Location



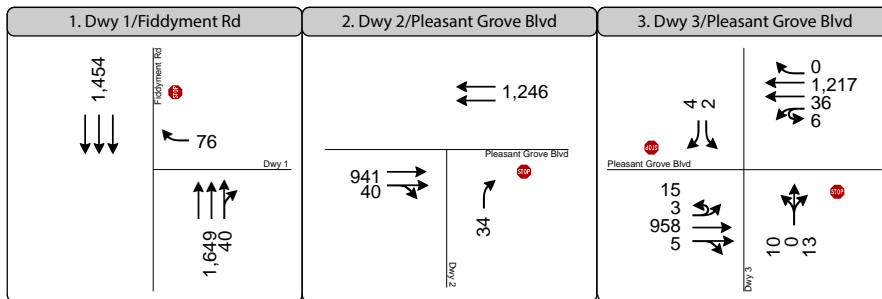
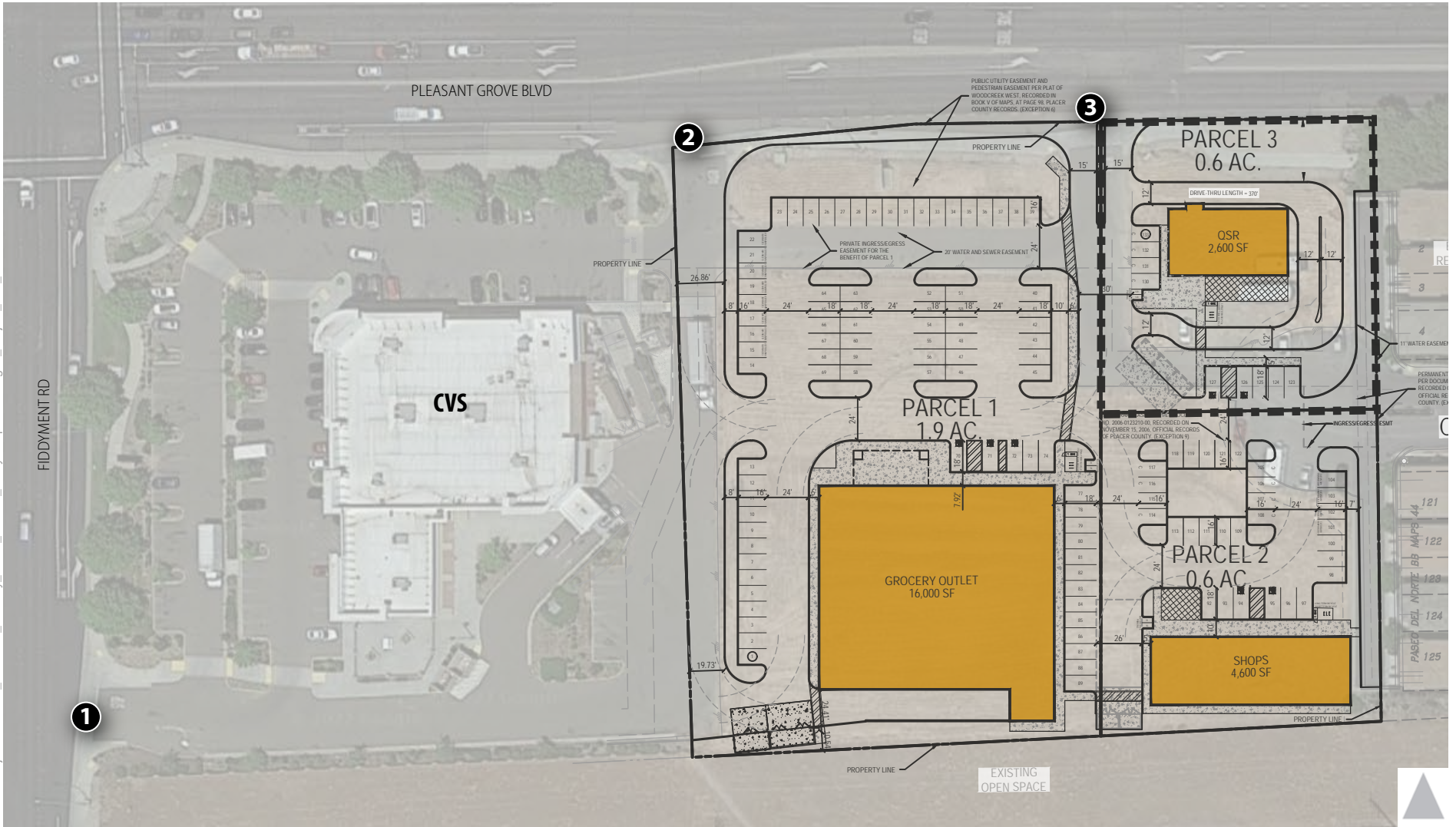
Study Intersection



Permitted Turning Movement



Figure 2
Project Site Plan



Study Intersection

↔ Vehicle Turning Movement

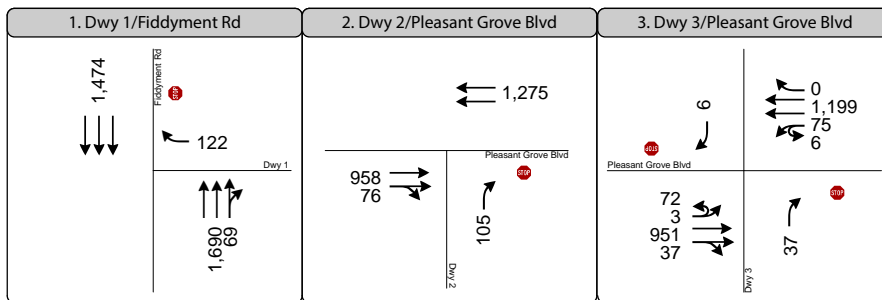
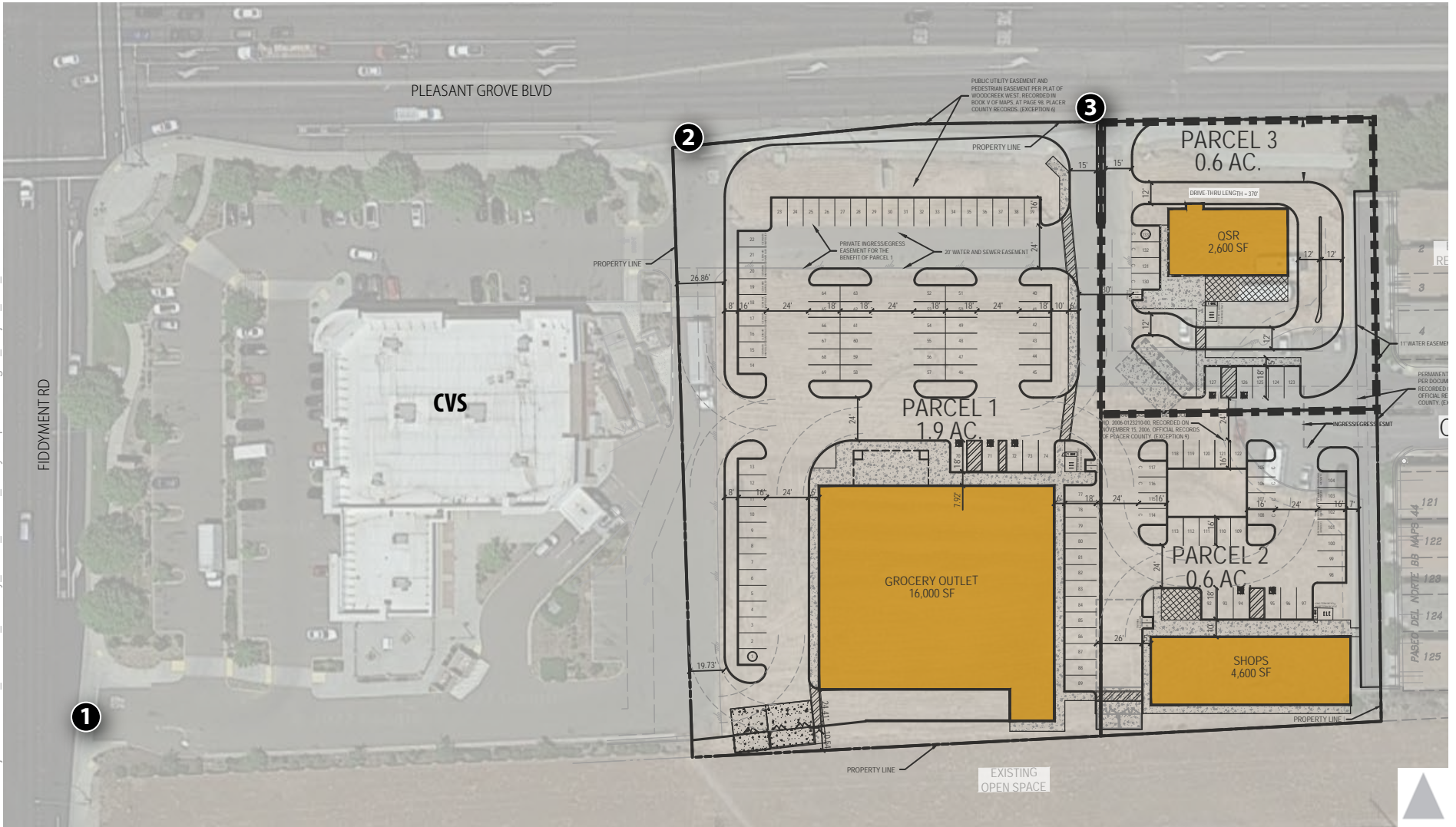
xx PM Peak Hour Volume

● Stop Sign

Note: Volumes at Driveway 3 represent conditions assuming the currently permitted full-access on the southbound approach (versus the recent prohibition of southbound left-turns via sign posted by a private party).

Figure 3
PM Peak Hour Traffic Volumes
and Lane Configurations -
Existing Conditions





Study Intersection

↶ Vehicle Turning Movement

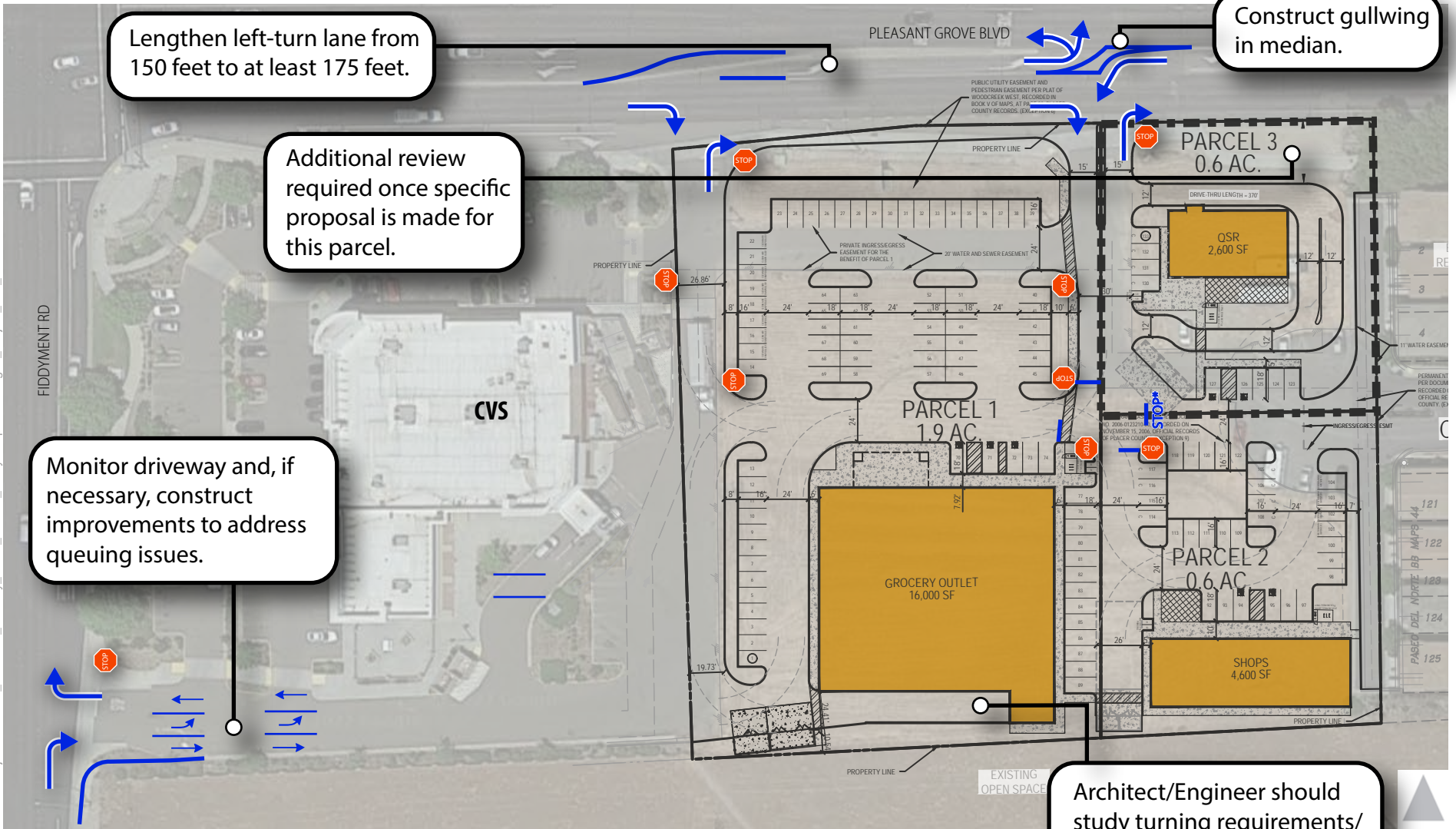
xx PM Peak Hour Volume

● Stop Sign

Figure 5

PM Peak Hour Traffic Volumes and Lane Configurations - Existing Plus Project with Access Modifications Conditions





Lengthen left-turn lane from 150 feet to at least 175 feet.

Construct gully in median.

Additional review required once specific proposal is made for this parcel.

Monitor driveway and, if necessary, construct improvements to address queuing issues.

Architect/Engineer should study turning requirements/ paths for delivery trucks.

STOP Sign

STOP* = Pavement Marking (No Posted Stop Sign)



Figure 6
Recommendations